

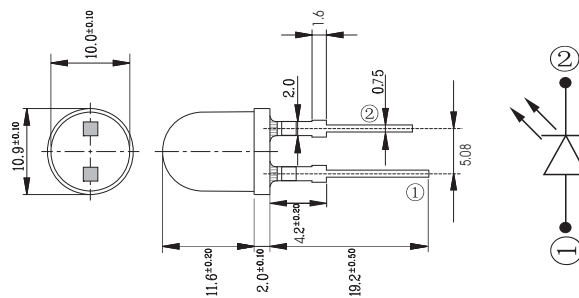


φ10mm Flange LEDS

Part Number	Emitting Material	Wave Length λ _D (nm)	Emitting Color	Lens Type	V _f (v)	IV(1m)	Viewing Angle 2θ _{1/2} (°)
					Typ.	Typ.	
CL-10R-0.5W	GaAlAs	700	Red	Red Diffused	2.3	5	35
CL-10W-1W	GaAsP/GaP	—	White	White Diffused	3.5	7	35
CL-10G-1W	GaP	520	Green	Green Diffused	2.2	9	35
CL-10Y-0.5W	GaAsP/GaP	585	Yellow	Yellow Diffused	2.1	8	35
CL-10B-1W	GaInN	460	Blue	Blue Diffused	3.5	7	35

Package Outlines

(unit:mm)



- Remark : 1. “△” represents Internal Circuit Feature: A、C、E...Common Cathode, B、D、F...Common Anode.
 2. “□” represents LED Emitted Color.
 3. All dimensions are in millimeters, tolerance is 0.25mm unless otherwise noted.
 4. Above specification is measured by CHANGLI's test instrument and may be changed without notice.
 5. Supplier will reserve authority on material change for above specification.